

ATAG

Heating

QUICK RIG



THE **ECO**LOGICAL CHOICE

- Outputs 44.7kW – 171.9kW
- Lowest lifetime costs
- Lowest gas usage
- Lowest emissions
- Easy assembly
- Pre assembly options
- 316 stainless steel heat exchanger
- Multiple flue options
- Optional cascade controller
- 5 year warranty

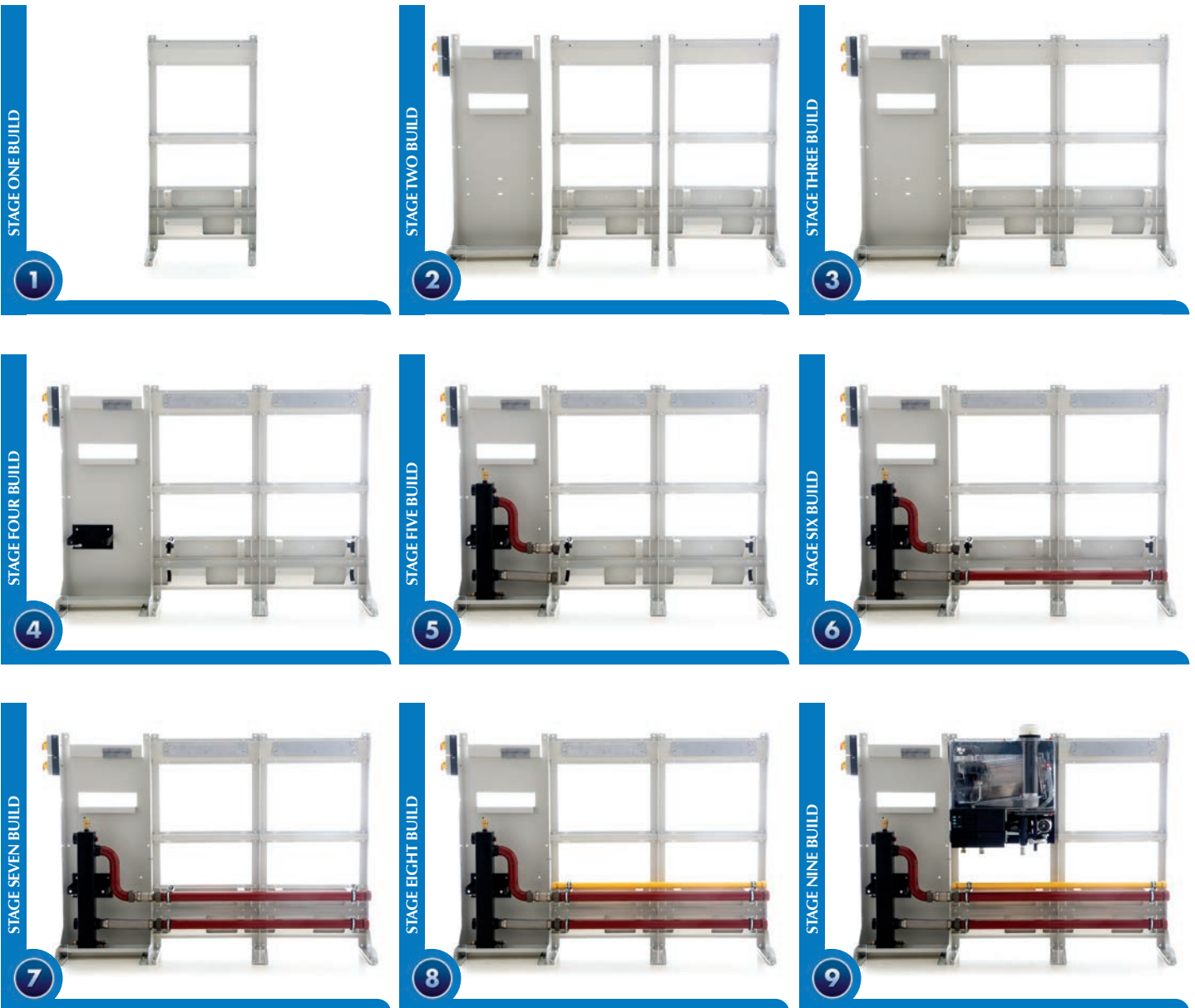
ASSEMBLY GUIDE



QUICK AND EASY TO INSTALL WITH THIS GUIDE

- **Unpack all components** • **Check the components against the packing list**
- **The header can be fitted to left or right of the boiler rig**
- **Example shown is a two boiler “in line” configuration, other configurations follow the same assembly procedure.**

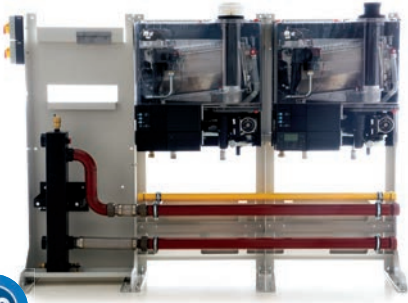
• **Wayne Herbert**
Product, Technical & Training Manager



- 1 On free standing rigs fit bottom rear support brackets, or secure frame to the wall.
- 2 Fit electrical switches to smaller frame. This frame can be fitted to the left or right of the boiler frames.
- 3 Assemble frames together using the supplied bolts at the top and bottom. Fit foot adjuster and level frames. Frames can also be secured to the floor if required.
- 4 Fit boiler, pressurisation and pipe work support brackets.
- 5 Fit the low velocity header to its bracket and connect the two flexible connections. Make all connections hand tight only at this time.
- 6 Connect the return, bottom, common header pipe. Fit blanking flange to one end.
- 7 Connect the flow, top, common header pipe. Fit blanking flange to one end.
- 8 Connect the common gas header. Fit blanking flange to one end.
- 9 Hang the first boiler centrally onto its hanging bracket.

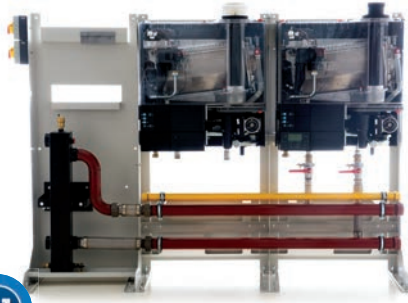
STAGE TEN BUILD

10



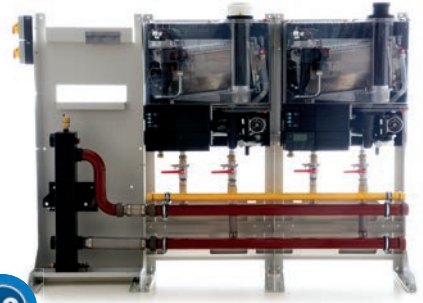
STAGE ELEVEN BUILD

11



STAGE TWELVE BUILD

12



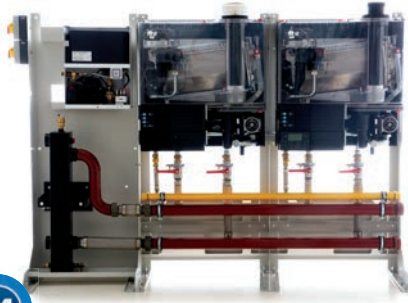
STAGE THIRTEEN BUILD

13



STAGE FOURTEEN BUILD

14



STAGE FIFTEEN BUILD

15



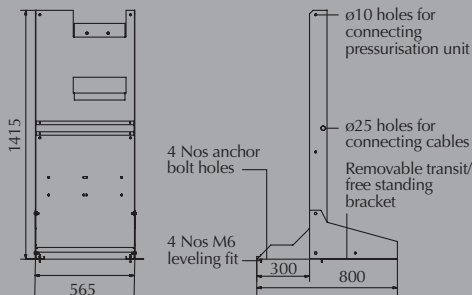
STAGE SIXTEEN BUILD

16

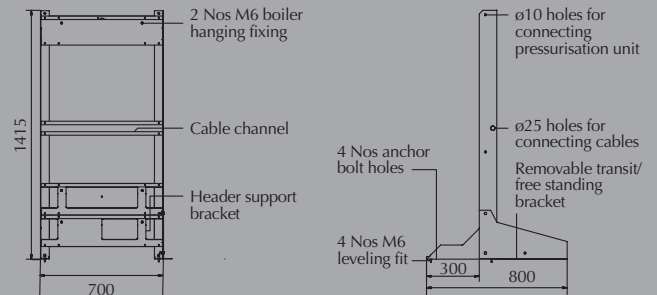


- 10 Hang the second boiler on its hanging bracket ensuring the flues are 700mm apart.
- 11 Connect the boiler flow and return connection, isolation valves, non-return valve, drain tee and flexible hose between the boiler and header pipe work.
- 12 Connect the second boiler flow and return connects as previous point.
- 13 Connect the gas pipe work and isolation valve between the boiler and common gas header.
- 14 Fit the pressurisation unit.
- 15 Connect all pipe work, mains in, outlet supply and overflow pipe work to the pressurisation unit. Run all cables in recessed trunking and wire boilers, pressurisation unit and optional MAD controller.
- 16 Tighten all connections and fit boiler cases.

BRACKET ASSEMBLY PRESSURISATION UNIT



BOILER BRACKET ASSEMBLY



Choose an ATAG Condensing Boiler

kiwa
Partner for progress

breem

GASTECH

It's a **comfortable** decision to make

ATAG - Just who are we?

Based in Holland, ATAG Heating Group is a world leader in the design and manufacture of high efficiency, low emission, condensing, gas boilers.

Manufactured from the highest quality materials to ensure years of trouble-free use, all ATAG boilers are designed with ease of access to key components for servicing and repairs, should they ever be required.

Your local installer

ATAG don't just stop at making boilers, we train the people who fit them. With a number of dedicated training facilities across the UK, we ensure that whoever installs your boiler has access all the technical knowledge and expertise to provide a first class job. So, that means heating and hot water just right for you, for many years to come.



THE **ECO**LOGICAL CHOICE



ATAG
Heating

ATAG Heating UK Limited,

Unit 3 Beaver Trade Park, Quarry Lane, Chichester, West Sussex PO19 8NY

Tel: **01243 815 770** Fax: 01243 839 596 Email: info@atagcommercial.co.uk Web: www.atagcommercial.co.uk